

# LUNARTIK<sup>®</sup>

in a Cup of tea

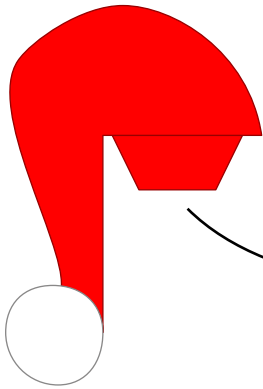
## PAPER TEAS



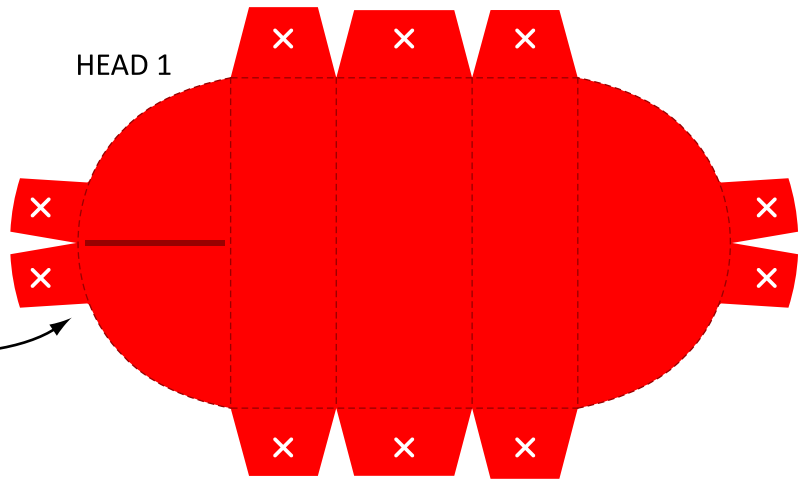
CHRISTMAS SPECIAL BREWS  
SANTEA CLAUS & ELFY 2012

# CHRISTMAS SPECIAL BREWS - SANTEA CLAUS

HAT



HEAD 1



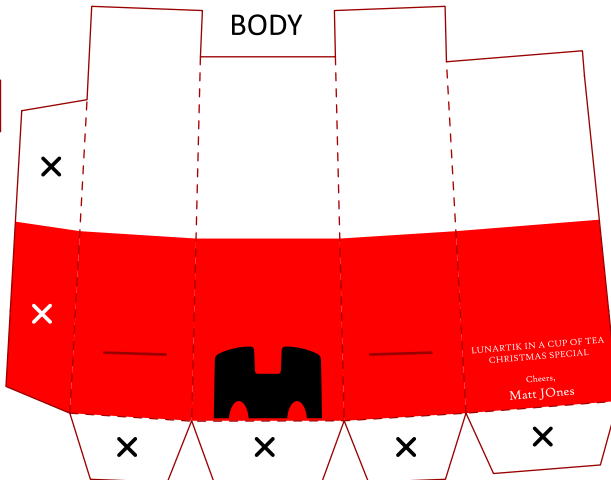
HEAD 2



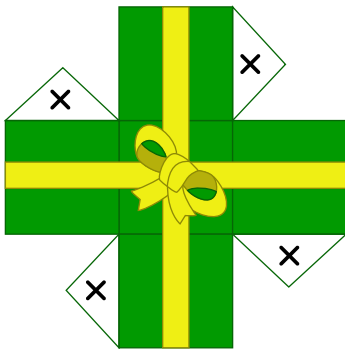
BODY



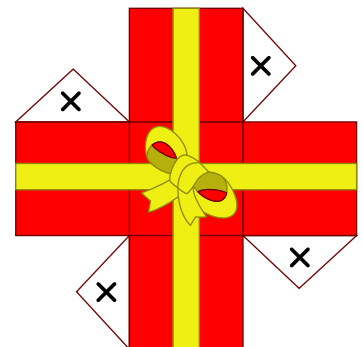
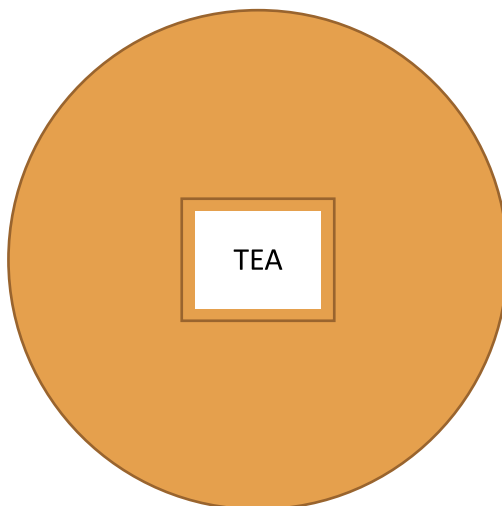
RIGHT ARM



LEFT ARM



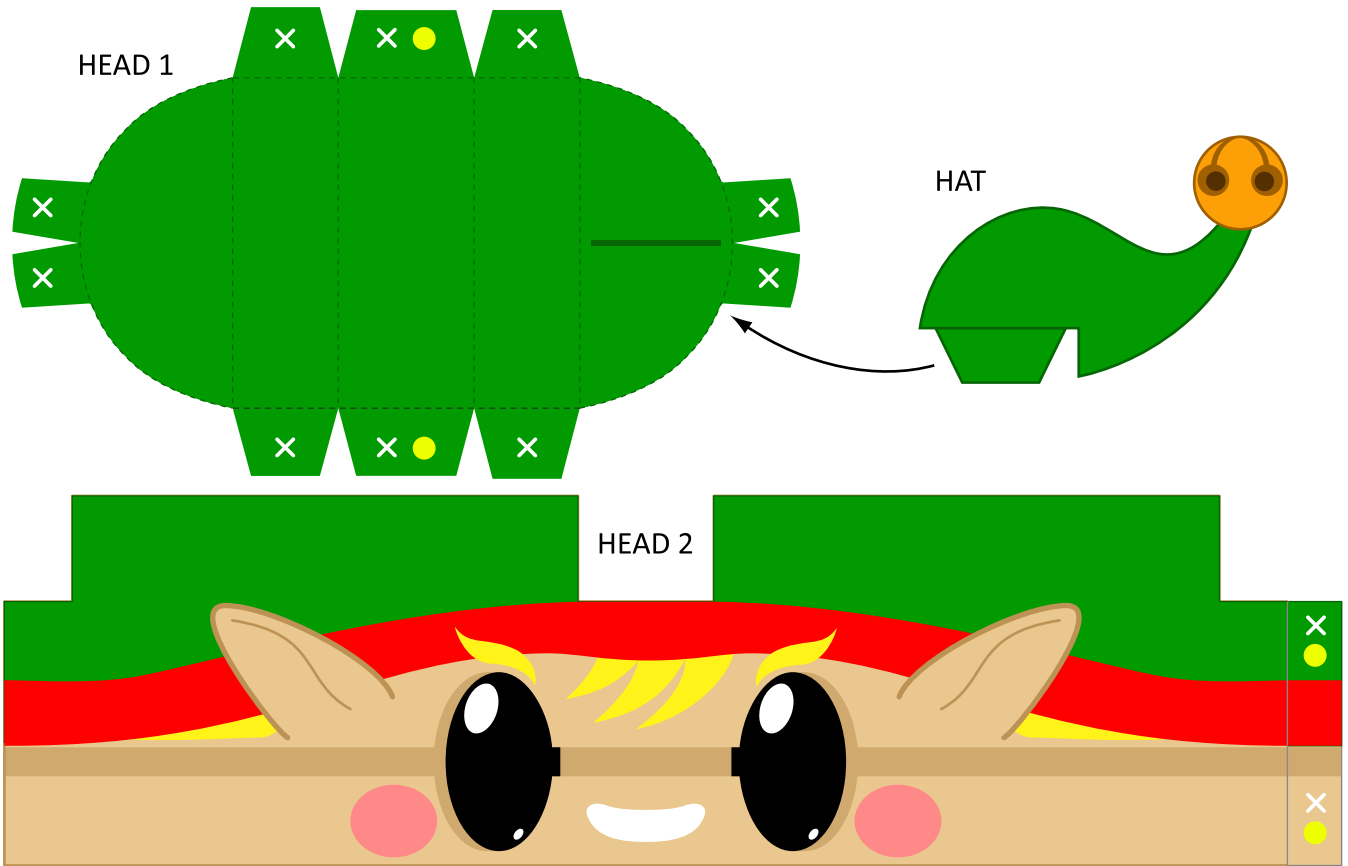
SUGAR CUBE GIFT



SUGAR CUBE GIFT

KEY	
X	REQUIRES GLUE
- - -	FOLD / SCORE LINE
—	ARM/HAT HOLE - CUT
●	TAPE FOR EXTRA SUPPORT

# CHRISTMAS SPECIAL BREWS - ELFY

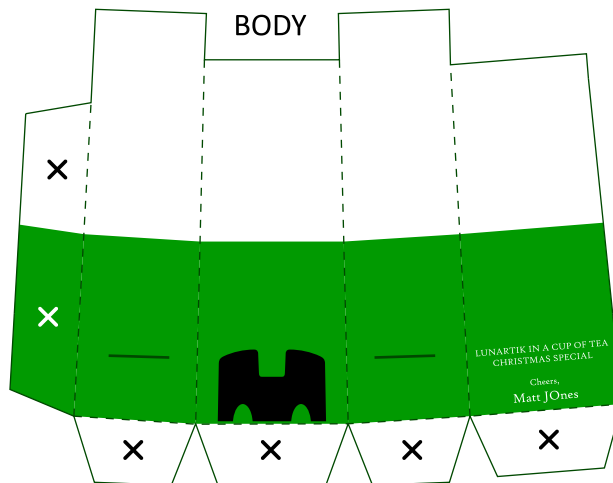


HAT

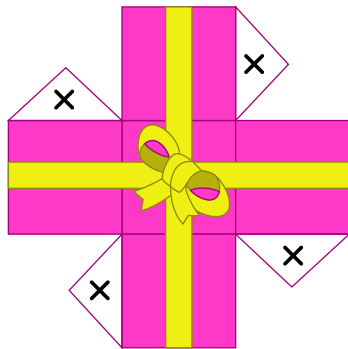
HEAD 2

RIGHT ARM

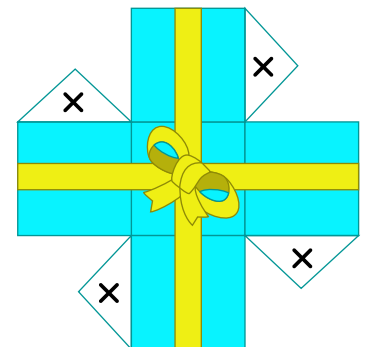
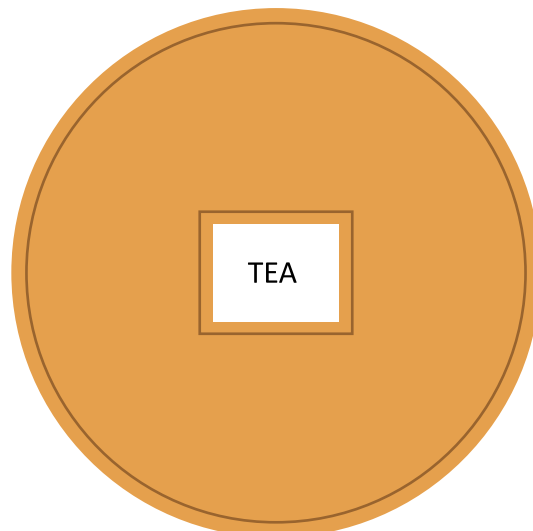
LEFT ARM



BODY



SUGAR CUBE GIFT



SUGAR CUBE GIFT

KEY	
x	REQUIRES GLUE
- - -	FOLD / SCORE LINE
—	ARM/HAT HOLE - CUT
●	TAPE FOR EXTRA SUPPORT

# BREWING GUIDE

## What You Need:

- 2 "Mini Series 2" Paper Cups - Very Important!
- White Paper or Card 80 - 180 Grams. Whatever goes into your printer ok.
- Knife + Scissors.
- White glue or Double Sided Tape. UHU works well.
- A metal Ruler.
- A Cutting Mat.
- A4 Colour Printer.
- A Chop Stick or Round Pen to help form the hand curves.
- 30/50 Minutes Construction Time.

## Tea Construction Notes:

- Cut out all the components from the printed A4 sheets.
- Score along the dotted Lines with a knife carefully.
- Use **Glue + Tape** where **X** and **O** mark the tabs.
- Cut ELFY ears so they stick out! Cut just around the line.

### Head 1:

**Requires scores and cuts - Connects to HEAD 2.**

When fitting make sure to secure the Front and Back Tabs with **Glue + Tape** to make a really good bond as **HEAD 2** shape tends to spring open. Notice that there is a **HAT HOLE**, which needs to be on the correct side, otherwise your **HAT** will not have the print facing forward.

### Head 2:

**Requires no scores, just cuts - Connects to HEAD 1 and BODY.**

Just cut out and roll around and use **Glue + Tape** to secure this part. Once the glue is dry, roll the head section between the palms of your hands carefully. This action will give the head that lovely elliptical shape and will also make it less likely that the joint will want to spring open.

### Body:

**Requires scores and cuts - Connects to HEAD 2 and TEA**

The body looks long, as it holds the **COMPLETED HEAD** in place. The body also connects to the **TEA**. The flaps go underneath the tea, and are then secured in place with **Glue**.

### 2 Arms:

**Requires just cuts - Connects to BODY.**

These both fit into the **BODY'S** arm holes (cuts). The Hands require Shaping so using a pen or chop stick to make the Hands a nice curved shape and they will follow the contours of the top edge of the **Mini Series 2 Paper Cup**.

### The Tea:

**Requires just cuts - Connects to BODY and Mini Series 2 Cup Packaging.**

Cut the hole from the centre. Fits onto the top of the Mini Series 2 Paper Cup about 8mm deep from the top.

### The Hat:

**Requires just cuts - Connects to HEAD 1.**

This piece fits into the **COMPLETED HEAD** at the top.

### Sugar Cube Gifts:

**Requires scores and cuts - Connects to NOTHING**

These **Glue together** for easy assembly.



You will need some Mini Series 2 Packaging Cups.



This is what it looks like with the HEAD REMOVED



Finished Teas! WOOP WOOP!!!

MERRY CHRISTMAS  
CHEERS,  
MATT JONES & TEAM